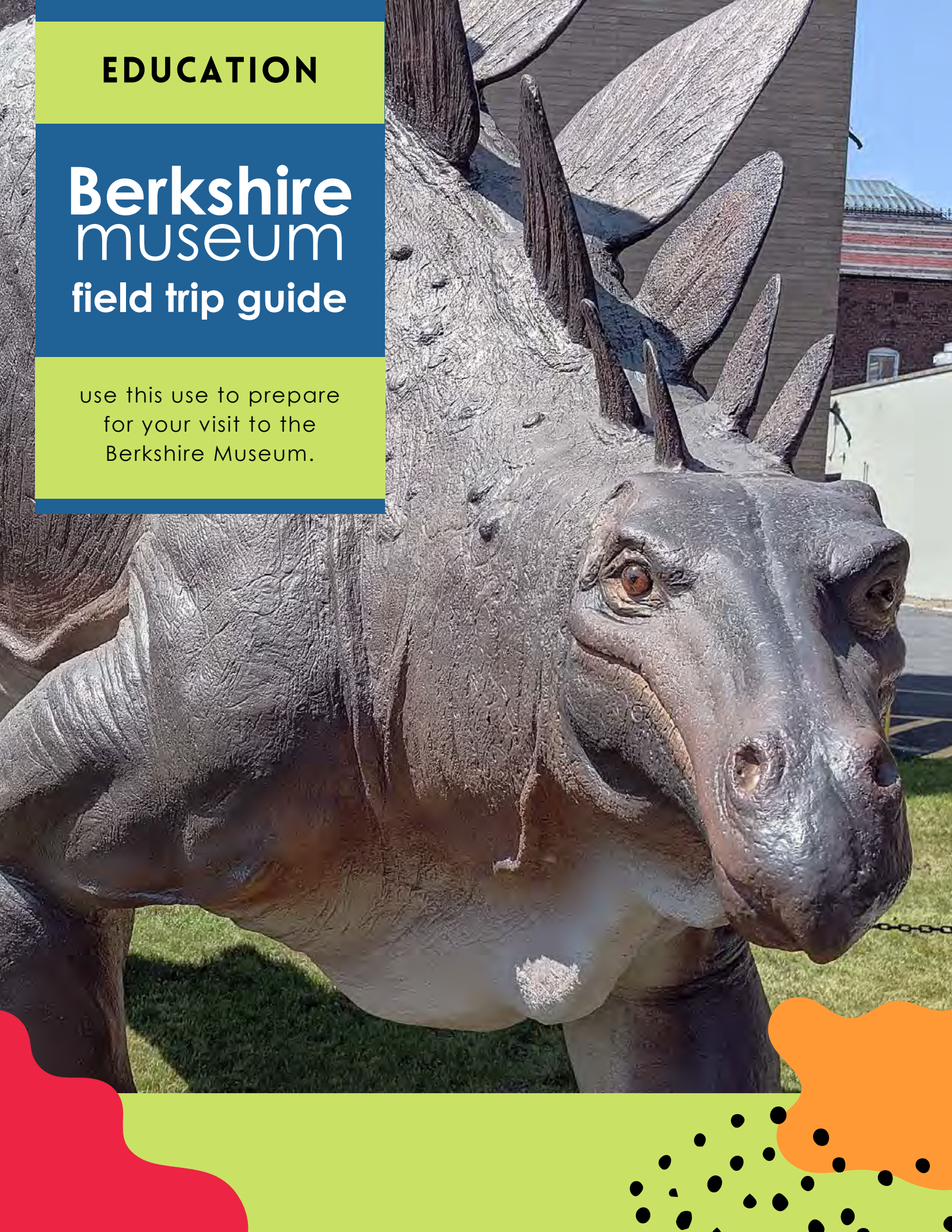


EDUCATION

Berkshire museum field trip guide

use this use to prepare
for your visit to the
Berkshire Museum.



getting started

First off, welcome!

We are so excited that you, as a class, have decided to come to learn with us at Berkshire Museum. During your visit to the museum, you will get to examine, experiment, and explore exciting subjects by using and viewing objects from our collections.

This guide is designed to help prepare for educator-led programmed visits.

Take a quick look to get ready, and we will see you soon!

contents

getting started.....	1
what is a museum?	2
digital discovery.....	2
museum manners.....	3
what to expect.....	4&5
gallery guide.....	6
additional information.....	7
current programming.....	8
educational team.....	9

what is a museum?

A museum is a building in which objects of historical, scientific, artistic, or cultural interest are stored and exhibited.

The Education team strives to engage learners in making connections between the sciences, history, and the arts, prompting an understanding of their place in the world through our programming.

digital discovery

Watch this fun Digital Discovery video starring staff to learn more about Berkshire Museum.



https://www.youtube.com/watch?v=u5Fw_WnFoTs&t=272s

watch our entire series at www.explore.berkshireremuseum.org

museum manners

**Important to go over
with learners before
any visit.**

- **We walk, don't run.**
- **We use indoor voices.**
- **We use our eyes to look at things closely.**

There are some things, like artwork and taxidermy, that we absolutely cannot touch, but at Berkshire Museum there are also things that we can touch. Who can tell me what you should do if you're not sure if something is okay to touch or not? That's right, ask!

- **We stick together with our group.**

Make sure you always know where your teacher/chaperone is and stay in the same room as them so they don't get lost.

- **In the Aquarium, we must be very quiet so we don't disturb the animals.**

Fish, reptiles, and amphibians are very sensitive to vibrations, like the ones you make when you talk loudly or tap on their enclosures. Please don't yell, run, or tap on the enclosures as it can upset or harm the animals.

- **Food and drinks are not allowed in the galleries.**
- **Please do not use writing utensils unless handed out by museum staff.**

what to expect

Educator-led programs are designed to deliver engaging programs so depending on the size of the group, each visit could look different.

Are you coming for?:

- 1 program
- 1 program and a self-guided tour
- 2 programs
- 2 programs and a self-guided tour

At the Berkshire Museum, programs are 45 minutes long so that learners have plenty of time to examine, experiment, and explore.

We ask groups that are doing multiple programs and/or self guides to be divided into groups BEFORE arrival for an expedited welcoming process.

Running late? No reasons to worry, everything we teach is adaptable to a time crunch and still be fun and engaging.

what to expect

Visiting

Visiting school groups are welcome to begin arriving to Berkshire Museum at 9:30 on the day of the visit.

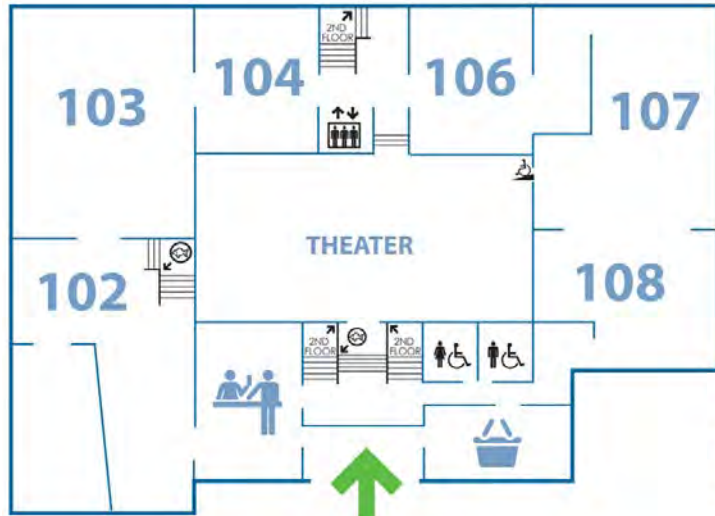
Greetings

Museum educators will greet you at the front and get you started with your program. If you are doing a self-guided tour, a museum staff member or volunteer will give you an orientation before sending your students in chaperone groups to explore. If you are doing a guided tour or workshop, wait for instructions from a museum educator.

Cancellation Policy

If you need to cancel your reservation, please call us at least one week prior to your scheduled visit. We will be happy to set up another time for your visit.

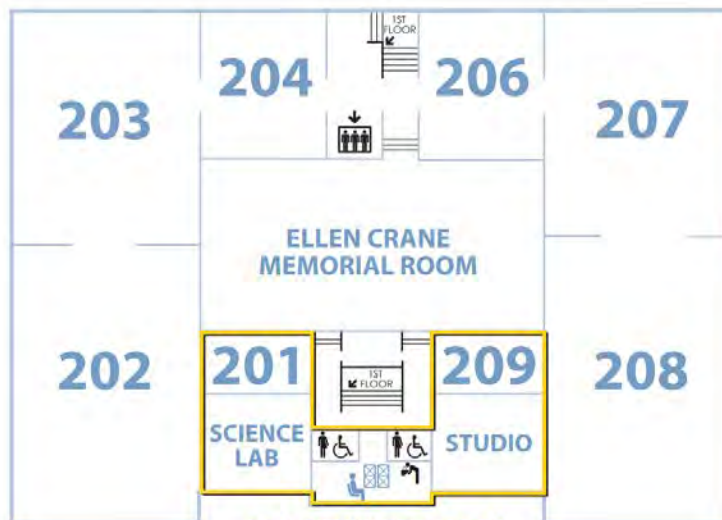
gallery guide



1st floor

- Elevator
- Restrooms
- Museum Shop
- Guest Services

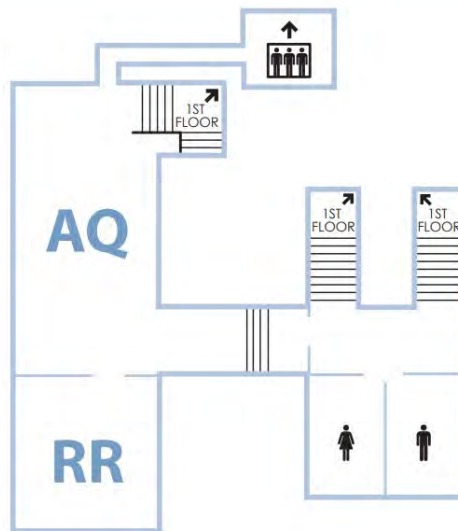
START HERE



2nd floor

- Elevator
- Family Restrooms
- Water Fountain
- Quiet Seating

ALL-NEW SPACES!



lower level

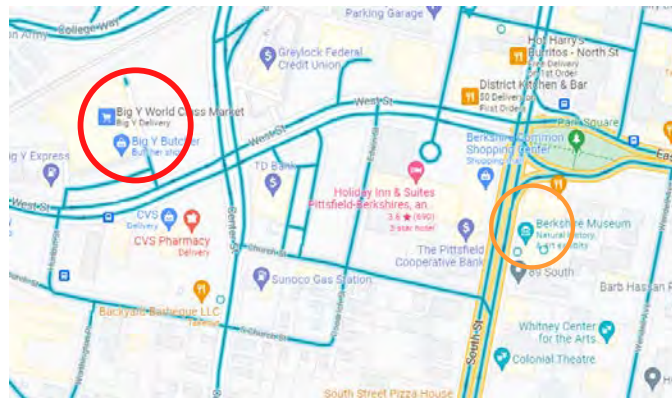
- AQ** Aquarium
- RR** Reptile Room

- Elevator
- Restrooms

additional information

Bus Parking

Unfortunately, we do not have designated bus parking at our facilities. Buses are permitted to park nearby in the Big Y parking lot; located at 200 West Street.



Pre/Post Packets

Every Educator-led program comes with a packet of pre and post materials related directly to the program taught. These packets are emailed to lead teachers up to a week in advance. If you have not received a pre/post packet before your visit please email eanglin@berkshireremuseum.org

Chaperones

We invite one chaperone to every 5 learners for educator-led visits (excludes teachers). Additional chaperones are welcome but may have to pay entrance fee.

education team

questions? concerns?
contact one of the
education team
members, we will do
our best to help.



Liz Anglin
education manager
eanglin@berkshitemuseum.org



Joe Mastronardi
education specialist
jmastronardi@berkshitemuseum.org



Rosemarie Mele
education specialist
rmele@berkshitemuseum.org

